



JUNIOR FOSSIL TRAIL

2nd Edition

BARROW UPON SOAR

JUNIOR FOSSIL TRAIL

Note for parents and teachers: this leaflet is for children aged 7 to 12. The idea is that they walk the trail with an adult who has a copy of the adult Fossil Trail leaflet available free from the Library and Parish Council Office. The map in the adult's leaflet shows the route and gives information about the history of the village. This junior leaflet has a different purpose: to get children thinking about fossils and art.

INTRODUCTION

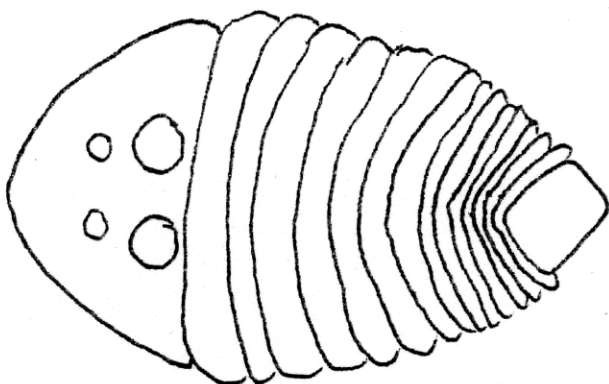
Fossils are remains or evidence of past life preserved in rocks. Lots of them can be found in the ground in Barrow upon Soar. The fossils shown in the Fossil Trail are all based on 'bodyfossils'. These are the preserved animal or plant itself (eg a skeleton, shell or leaf that has been turned into stone).

The 'fossils' shown in this trail are not real fossils: they are sculptures made by artists who liked the shapes. The artists have been creative. Most made their sculptures look very life-like. A few artists chose to make their sculptures very different from the original fossil, called 'abstract art' because they don't look like the real thing.

As you walk round the trail, use the chart below to tick when you have seen a fossil and put an **L** if you think it is 'life-like art' or **A** if 'abstract art'.

Fossil	1	2	3	4	5	6	7	8	9	10	11
Seen											
L?											
A?											

Start at the junction of the High St and Cotes Rd outside the Three Crowns pub. Go up North St to the first sculpture...

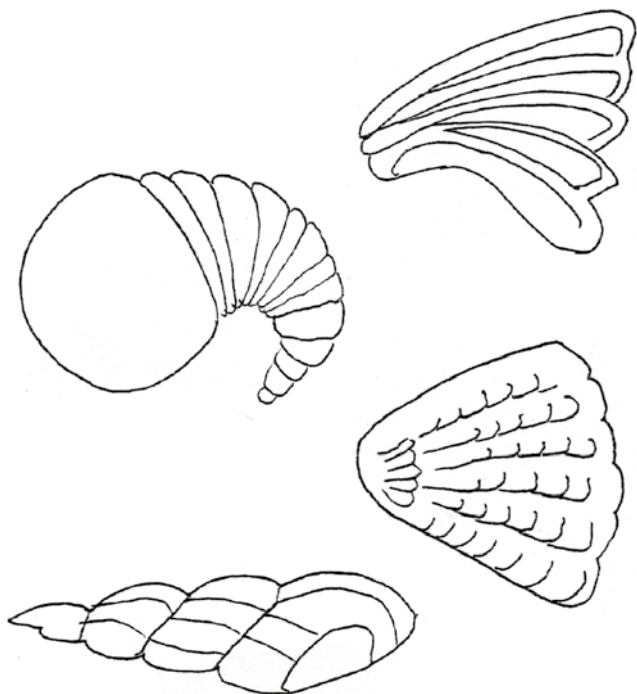


1 On the wall is an artist's impression of a **Trilobite**. They looked a bit like woodlice with armour on their backs to protect them. They could curl-up like woodlice but lived on the beds of shallow seas between 260 and 570 million years ago. Rub your hand over the armour. What does it feel like?

.....

.....

.....



2 Outside the Library are sculptures based on the shapes of **shells**. Shells are very common as fossils because they are hard and easily preserved. We don't know what colour they were but you can choose when you colour the pictures.

How many fossil shells can you count?

.....

Are they all the same shape?

.....

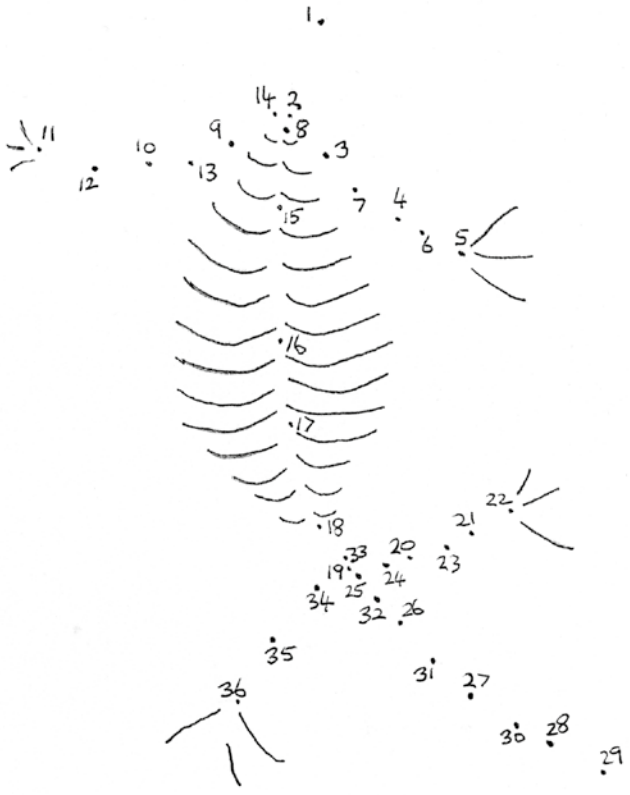
3 The Methodist Church has a sculpture based on part of a **Skeleton of a Plesiosaur**. Rub your hands over it. Describe what you feel.

.....

What kind of material do you think the artist has used to get this feel?

.....

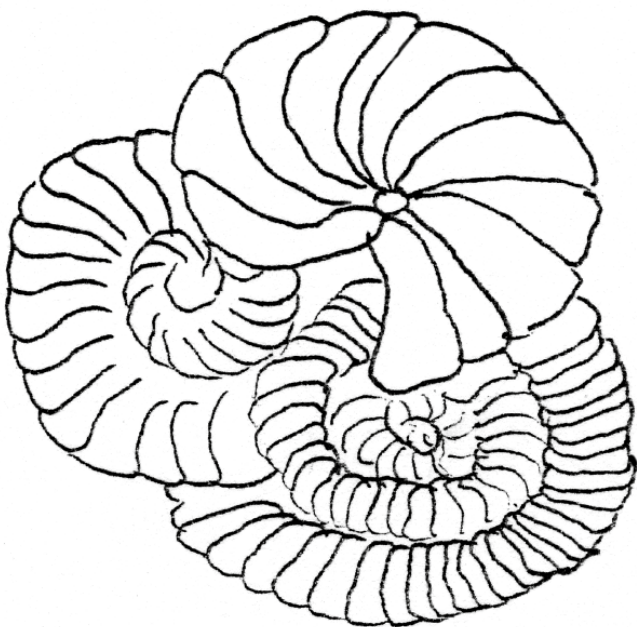
Complete the dot to dot picture of the Plesiosaur skeleton (below).



4 The Lime Tree Nursery has a sculpture that looks like **Ammonities**.

These were common about 200 million years ago living in the warm seas that covered Barrow. They were relatives of our modern-day squid and octopus. Their thin bodies were coiled inside the shell with the head and tentacles trailing outside as they swam backwards.

Colour the picture to show the number of ammonities.



5 Go along "The Hollybush" jitty to the old Catholic Church just before Church St. Above your head is a football-sized



sculpture of a drop of **Amber**. Amber is hardened, sticky plant sap. What colour is it?

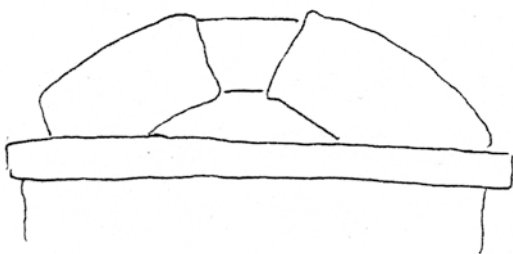
.....

Inside the sculpture is a model of a dragonfly; it is difficult to see unless the sunlight is shining through it. How could a dragonfly get inside the amber in real life?

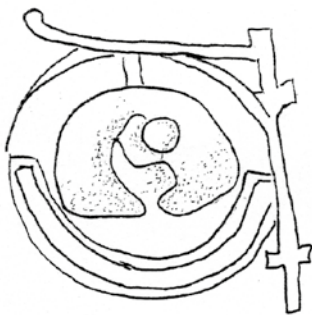
.....

6 Over the side gate to the Old Men's Hospital, just into Beveridge St, is a sculpture carved from limestone. What part of an animal do you think this might be?

.....



7 On 35, Beveridge St is a bronzed resin sculpture of a curled-up **Trilobite**. That's what the artist called it! How is it different from the trilobite in No. 1?



.....

.....

.....

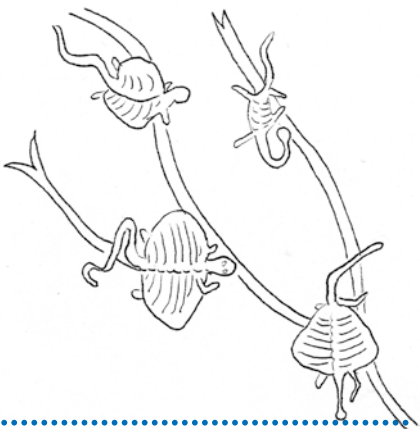
8 Beside Bishop Beveridge House is a large sculpture of an **Ammonite** (see No. 4). Fossil ammonites are sometimes found as big as this. Rub your hands over it.

What kind of material do you think the artist used?

.....

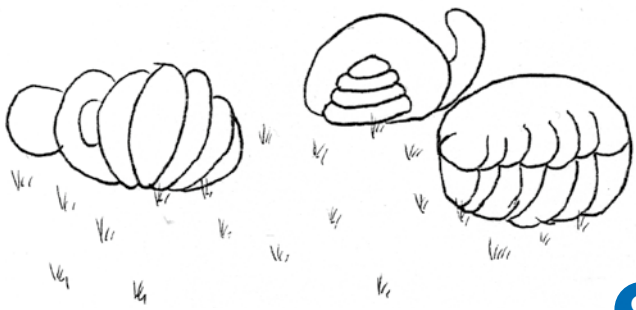


9 On 49, Beveridge St there are sculptures of four animals. What kind of animals do you think they are?

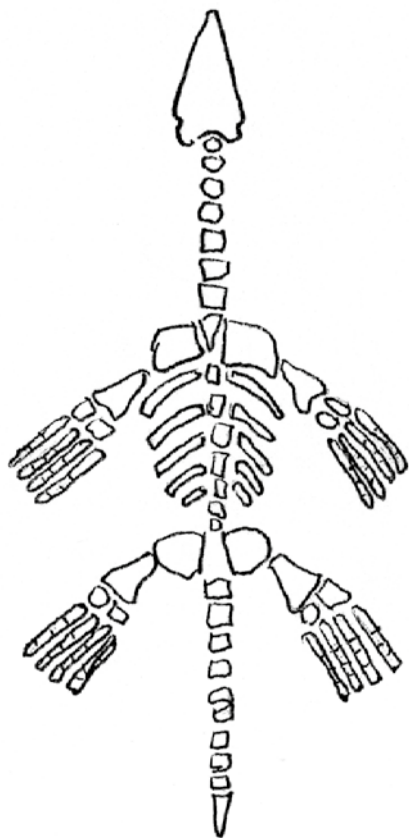


.....
Suggest how they might have moved about in life.

10 Beside the War Memorial are sculptures based on the **shapes of some early plants and animals**. They are an invention by the artist but things looking like these did exist. What modern plant or animal do the sculptures remind you of?



11 At Jerusalem roundabout is a representation of Barrow's most famous fossil: a **Plesiosaur**. This was a large reptile that lived in the seas covering Barrow about 200 million years ago. It hunted for prey rather like a killer whale does today. This kind of Plesiosaur was called *Rhomaleosaurus megacephalus* which means "strong lizard with a big head". A life-size model of the original fossil, which was found in Barrow limestone, can be seen in Charnwood Museum in Loughborough. It is well worth a visit.



12 Barrow is probably the only village in Britain to use the image of a Plesiosaur as a village sign. Walk up the High St to the Three Crowns. As you go, look for tiny images of the Plesiosaur on litter bins, planters, shop signs, street benches, and signposts. How many can you count?

.....

You can find out more about Plesiosaurs (also sometimes called Pliosaurus or Rhomaleosaurs – how confusing!) from www.plesiosaur.com

Choose one or two of the fossil shapes that you have seen on this trail and draw what you think the animal(s) might have looked like in life.
REMEMBER: FOSSILS ARE JUST THE PRESERVED PARTS. THERE WERE ALSO SOFT PARTS.....



You are the artist now and you can be as creative as the artists who made the sculptures of the Trail.

AMMONITE SCULPTURE NOW WELCOMES VISITORS TO BARROW



13 Barrow’s biggest fossil sculpture is at the far end of Sibley Road and tells visitors that they have arrived in Barrow.

Although the sculpture is taller than a person it is modelled on a real fossil **ammonite** found in Barrow which is only 2cm high.

The sculptor chose stone that has two layer of different colours. How has he made it look as though the ammonite is a real fossil buried in the stone?

.....
.....

What is written under the sculpture?

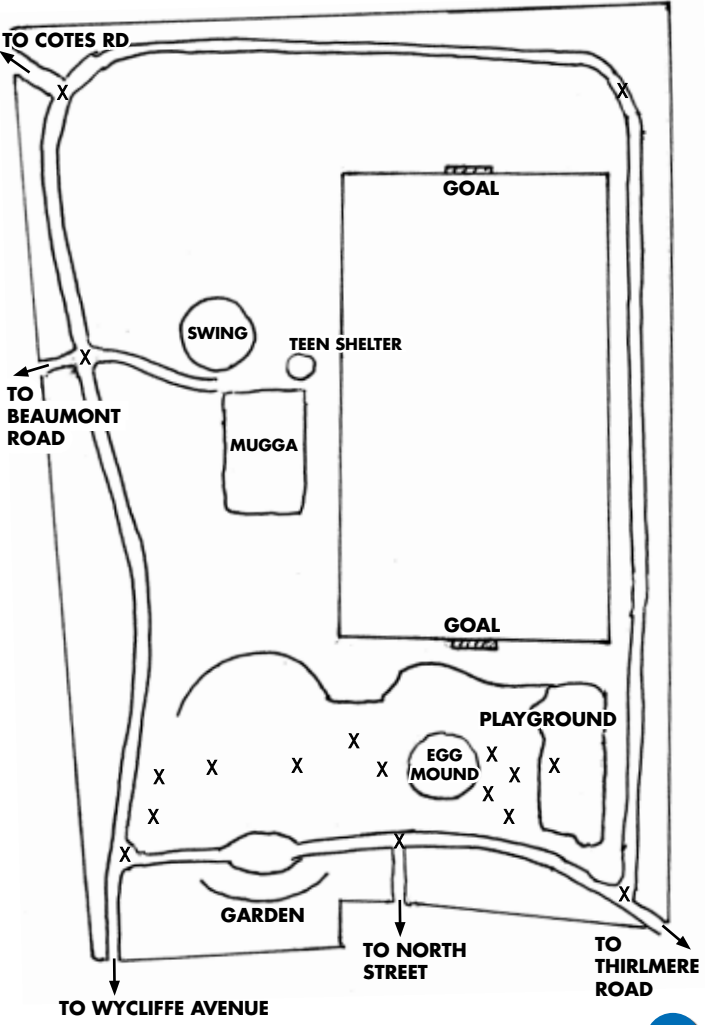
.....

MAP OF KING GEORGE V PARK

14 The park had a make-over in 2018. There are now images all over the park that represent Barrow's fossil past.

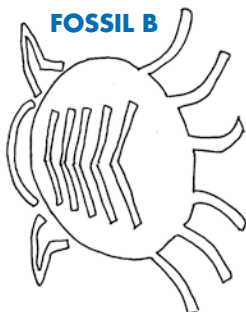
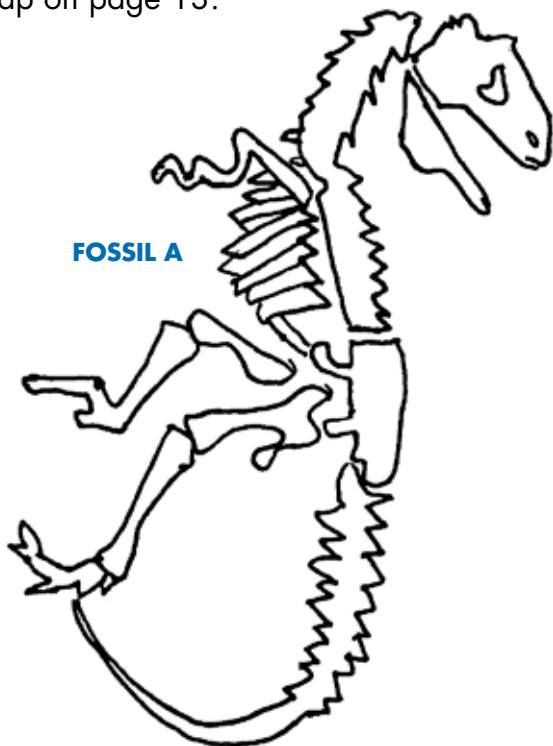
Here is a map of the park. It shows the path and the position of some of the fossil images.

HUMPHREY PERKINS SCHOOL



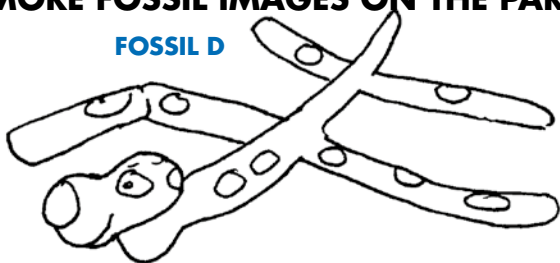
FOSSIL IMAGES ON THE PARK

15 Walk through the park. Use the pictures on page 14 and 15 to find the **CODE** letters of the fossil images then write their code letter or letters in the correct position on the map on page 13.

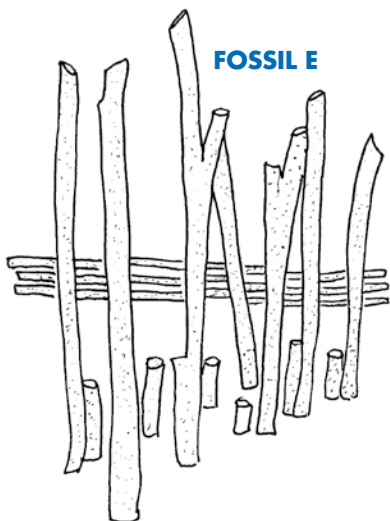


MORE FOSSIL IMAGES ON THE PARK

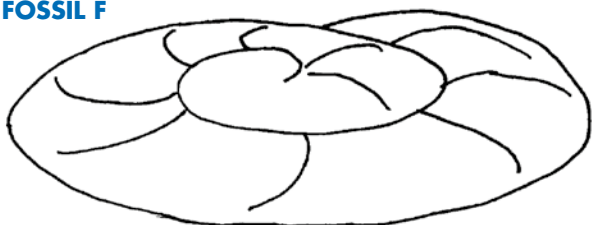
FOSSIL D



FOSSIL E



FOSSIL F



16 You may find some fossil images or structures that are not marked on the map. See if you can add them to the map.

FOSSIL WORD SEARCH

P E T I N O M M A L Y T D U I
S L R B M R S C I G X R L R M
M E E U H F C M E U E I O L M
D R Q S A A E N L Z T L M A C
K C O R I S M Y H W I O Z B P
F G M A T O O M C L N B Q I A
N E S O D P S N E A A I M L R
F U N S I U L A I R R T P E A
I E K G L A P V U D G E P N M
P F O S S I L R O R U P A X B
Z M U H R E Y W Y P I J P A E
O C E P V E N I V K O X N M R
Z L Q S E Q Q O W H S O Y S T
L U Q W W Y U U B E V V T J L
I C H T H Y O S A U R P S Q I

AMBER

GRANITE

OLD

AMMONITE

HAMMER

PLESIOSAUR

BONE

ICHTHYOSAUR

ROCK

DINOSAUR

KIPPER

SHELL

FOSSIL

LIMESTONE

TRILOBITE



HERITAGE GROUP

© Barrow-upon-soar Community Association

Illustrations by Chris Bates & Judith Rodgers

Thanks to the Heritage Lottery Fund for a grant to cover the costs

Produced by www.gogomarketing.co.uk